

# SOLRAC-A6



Indicative Seal Certified in conformity with ISO 17712:2013

## PULL UP TYPE SECURITY SEAL

### TECHNICAL CHARACTERISTICS:

Material: PP 50% recycled

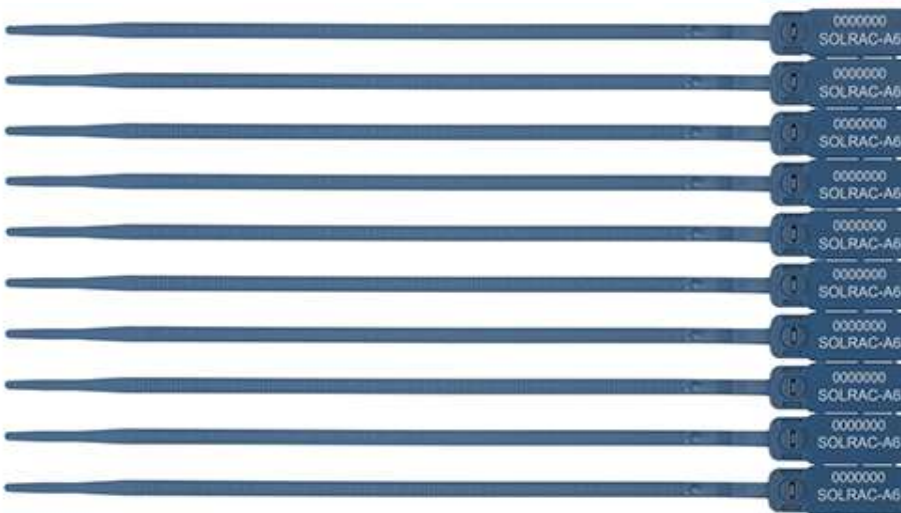
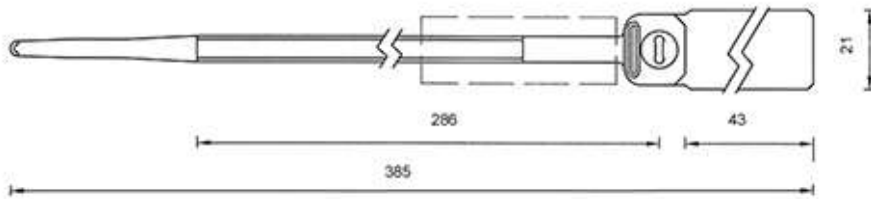
Closure: With metal insert

Tensile strength: 35 kg.

Available colors: blue

Other colors: consult

High resistance to temperature changes



### TECHNICAL DATA:

Printing area: 43 x 21 mm.

Filament section: Ø 7x2 mm.

Perimeter of closure: 286 mm.

Total length: 385 mm.

### PRINT OPTIONS:

Correlative numbering

Logo and / or text

Barcode

Writing bars

### TYPES OF PRINTING:

Thermal transfer

### PACKAGING:

Quantity per box: 1,000 units

Box weight: 5.4 kg.

Box size: 21x23x47 cm

Panels of 10 units



### APPLICATIONS:

Seal Transport of values, trucks,  
security bags, multiple uses

